


# Kualapuu Reservoir

Northwest Section

 Northwest Section

Northeast Section

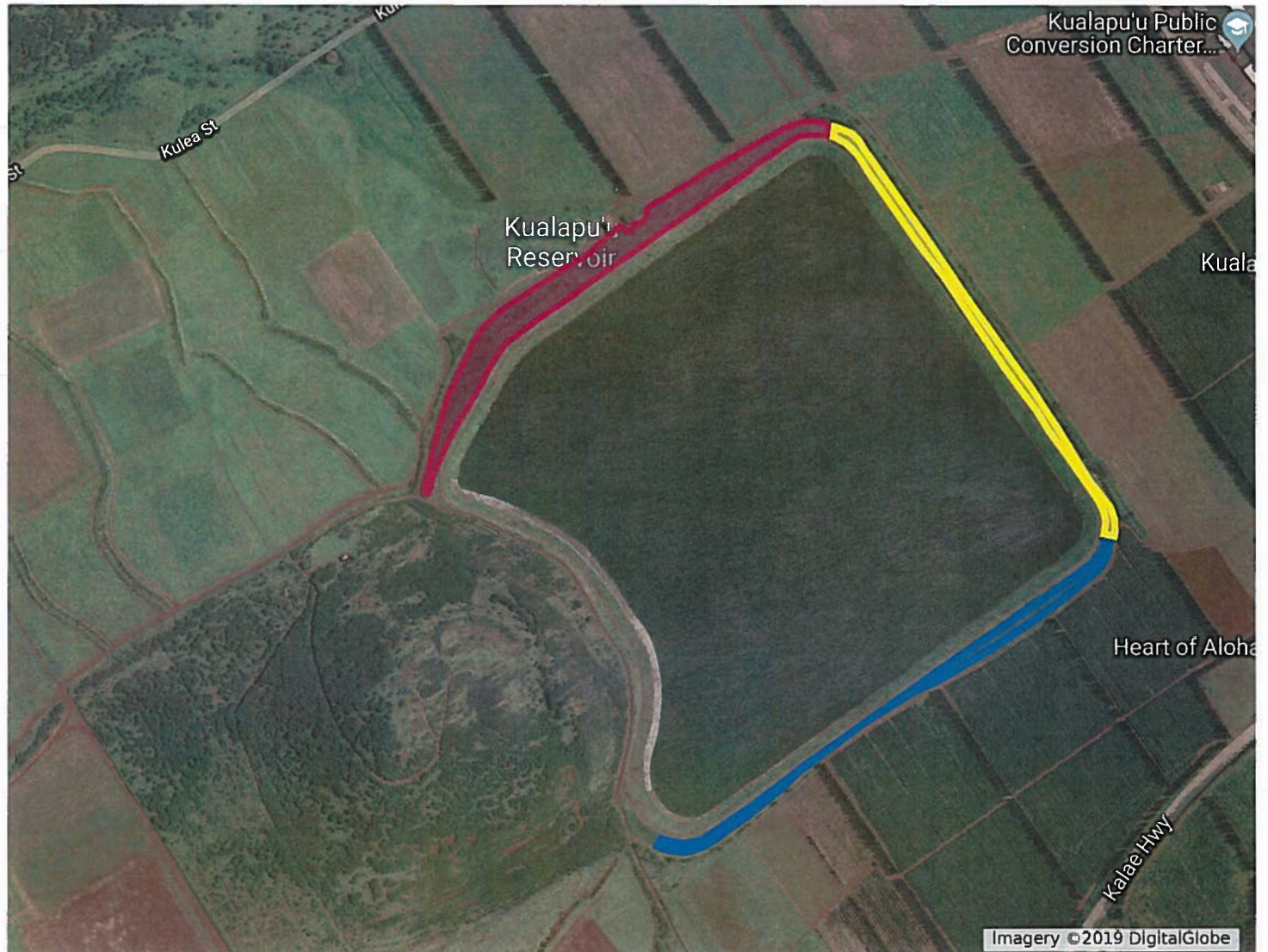
 Northeast Section

Southeast Section

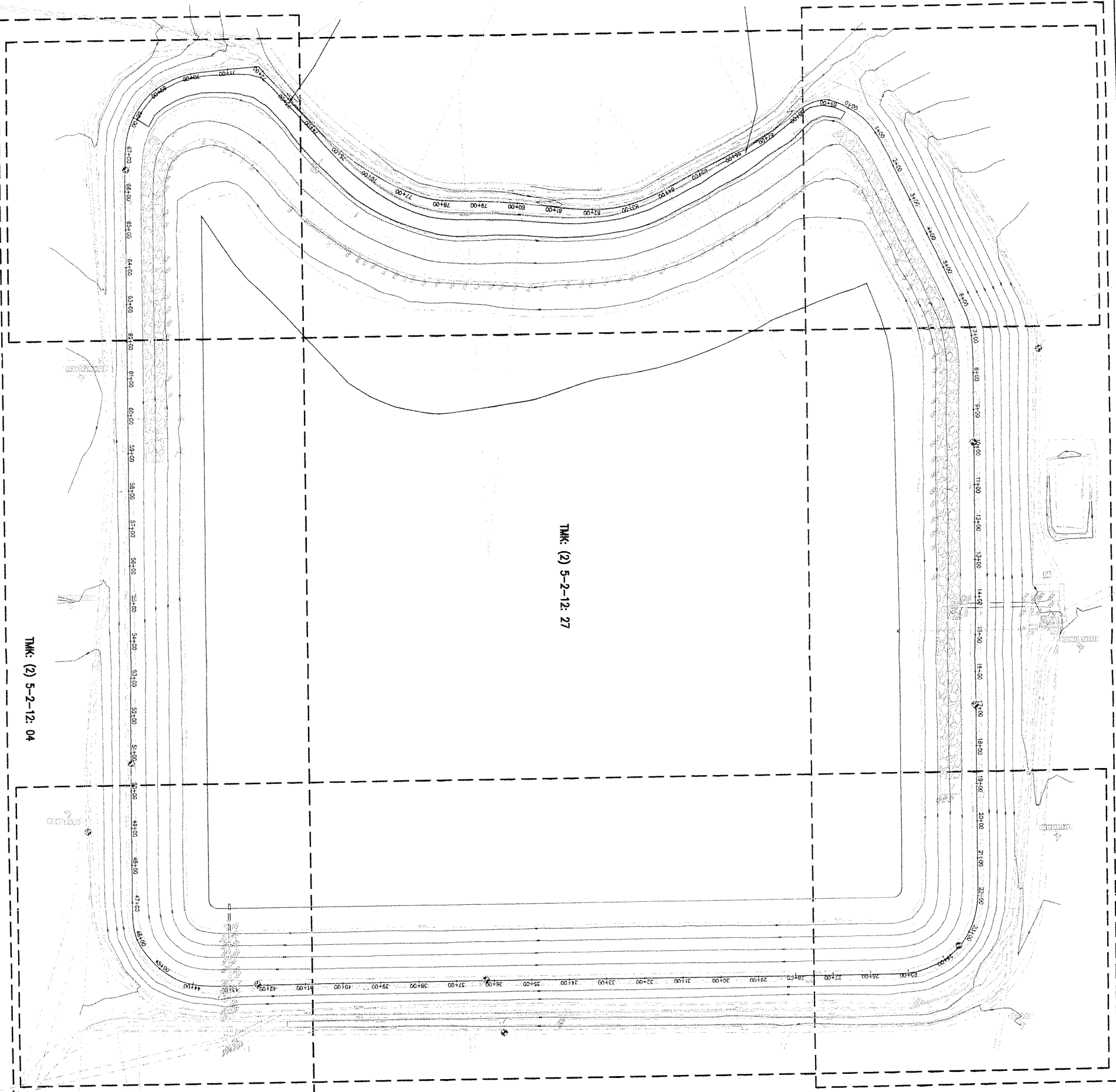
 Southeast Section

Approximate limits of  
vegetation removal.

See General Site and Key Plan  
for scale.



TRUE NORTH

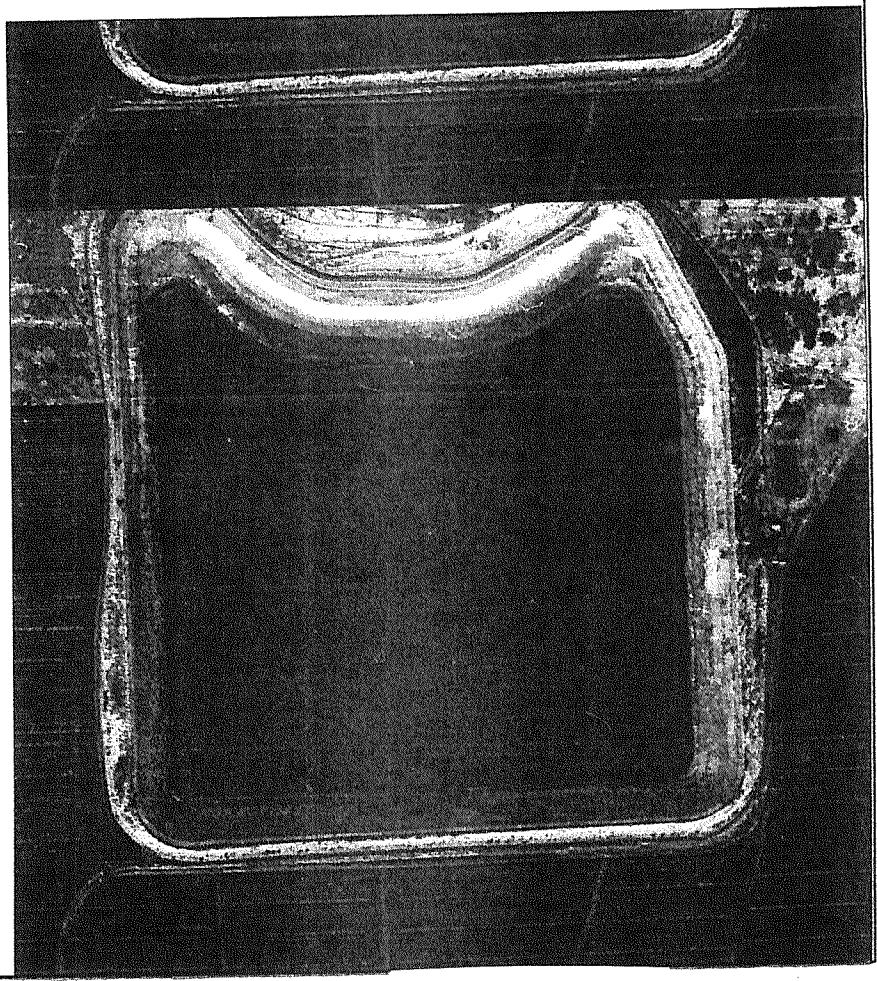


TMK: (2) 5-2-12: 27

TMK: (2) 5-2-12: 04

**GENERAL SITE AND KEY PLAN**

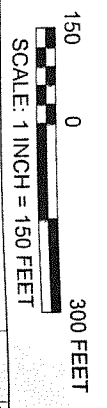
SCALE: 1" = 150'



**AERIAL PHOTOGRAPH (2002)**

NOT TO SCALE

REFERENCE:  
R.M. TOWILL CORPORATION (09-07-2002)



THIS WORK WAS PREPARED BY ME OR UNDER MY CLOSE PERSONAL SUPERVISION AND I AM A LICENSED PROFESSIONAL ENGINEER IN THE STATE OF HAWAII. I AM NOT PROVIDING ANY DESIGN OR CONSTRUCTION SERVICES TO ANY OTHER PROJECTS AT THE SAME TIME AS THIS PROJECT. I AM NOT PROVIDING ANY DESIGN OR CONSTRUCTION SERVICES TO ANY OTHER PROJECTS AT THE SAME TIME AS THIS PROJECT.

**KEALOHĪ C. SANDOZ**  
LICENSED PROFESSIONAL ENGINEER  
NO. 12382-C  
HAWAII, U.S.A.

STATE OF HAWAII  
DEPARTMENT OF AGRICULTURE  
AGRICULTURAL RESOURCE MANAGEMENT DIVISION

PROJECT NO. DOASW01-B  
KUALAPU RESERVOIR (H1-0041), HAWAII  
STATE IRRIGATION SYSTEM  
RESERVOIR SAFETY IMPROVEMENTS PROJECT

SHEET TITLE:  
**GENERAL SITE AND KEY PLAN**

Yogi Kwong Engineers, LLC  
DESIGNED BY: KS  
DRAWN: MS  
DATE: May 5, 2010  
CHECKED: JK  
SCALE: As Shown

NO.	DESCRIPTION	DATE	APP'D

DRAWING NO. **E-1**